



cycle

Romano Model 8000

features

A versatile practical design suitable for many uses and situations.

The shelters can be supplied in a variety of lengths in increments of 360cm or 540cm.

The Romano can be used as a shelter or corridor or smoking cubicle.

Supplied with a wide choice of RAL colours to the steel or aluminium profile.



colour

The steel and aluminium components can be supplied in a range of RAL colours. The side-walls are made of clear toughened glass, but can also be supplied in tinted glass. The roof panels are made of clear acrylic.

technical information

Shelter suitable as cycle shelter, corridor, bus shelter, carport and many other purposes.

The steel tubular profiles of the steel gutters and frames are hot dipped galvanised, shot blasted and available in a range of colours.

The aluminium bow rafters and clamping profiles are colour enamelled.

The wall cladding is made of 10mm thick toughened glass. The wall cladding is also available in other materials e.g. Trespa synthetic material, steel mesh, steel or aluminium profiled sheets, perforated sheets etc.

The roof panels are fabricated from 5mm thick acrylic.



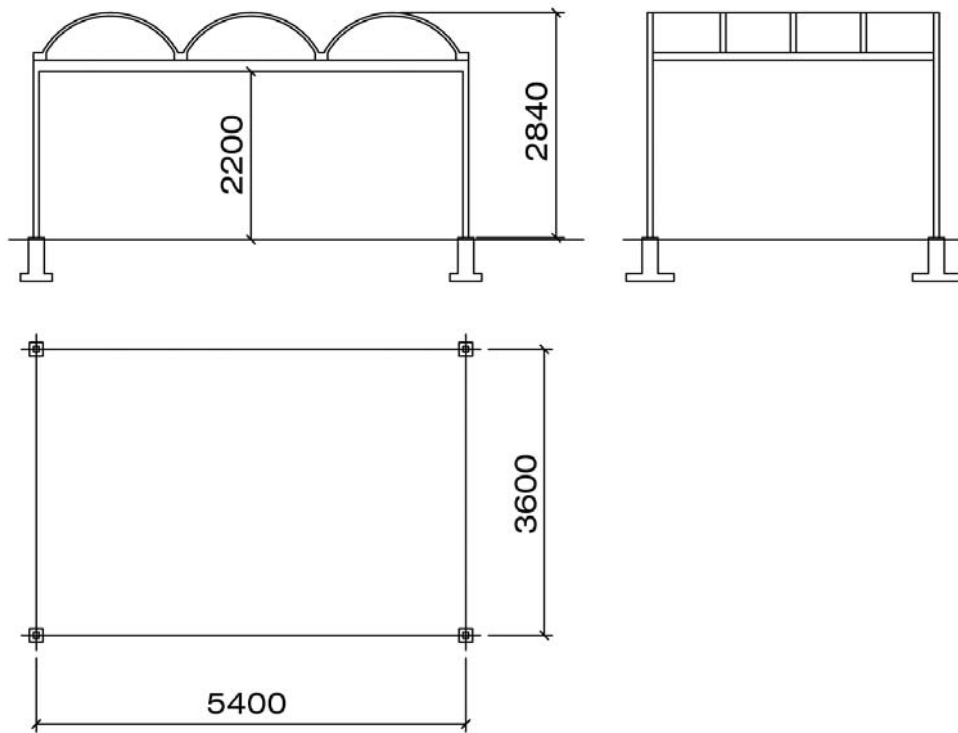
cycle

Romano 8000

measurements

The shelters can be supplied in various lengths in increments of 360cm centre to centre. The free height under the gutters is 220cm. This can be higher when used as a corridor. A shelter of 360 x 540 cm is suitable for 16 bikes with an average distance of 37.5 cm between the bike centres.

The width of the shelters can be supplied in increments of 540cm and 360cm. For cycle shelters, an increment of 540cm is recommended.



HALDO



Haldo Developments Limited

Western Way Bury St. Edmunds Suffolk IP33 3SP UK

T. +44 (0)1284 754043 F. +44 (0)1284 767260

info@haldo.com

www.haldo.com

Haldo Developments Ltd is a co.
registered in England and Wales

Reg no.940159

VAT No. GB 102 351627